

Meadow Habitat of Trent Country Park

Who lives here?

Down in the Long Grass

The world of 'minibeasts'

The long grass and soil of the meadow's 'carpet' are home to hundreds of tiny creatures, some of which are known as 'minibeasts'. They include small insects and spiders, as well as larger woodlice, centipedes and beetles. All make their home here and help to recycle decaying matter in the soil and roots.



Seven-spot
Ladybird



Grasshoppers
& Crickets



Ground Beetles



Harvestman



Bloody-nosed
Beetle



Amazing facts: Ants

There are 50 species of ant in the British Isles, some accidentally introduced from overseas. All ants 'milk' aphids of their sweet secretion called honeydew. Most of the ants seen are infertile female workers. Many species can bite but only some can sting. Only males (drones) and queens have wings, which are used just once during mating, after which the males die.



Green Tiger
Beetle



Earwigs



Centipedes
& Millipedes



Clover Weevils



Woodlice

On the Flower Heads

What can you see?

On warm and sunny days, the meadow comes alive with the sights and sounds of insects busily feeding on the nectar-rich wildflowers that are in bloom. Butterflies and day-flying moths can be seen basking in the heat out of the breeze.



Common
Blue



Gatekeeper



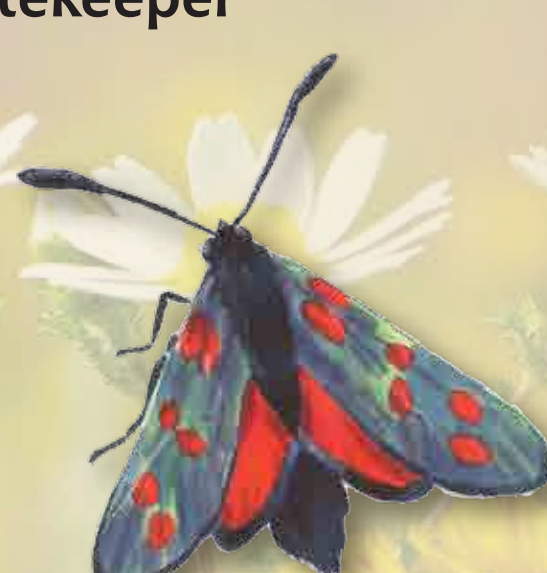
Honey Bee



Meadow
Brown



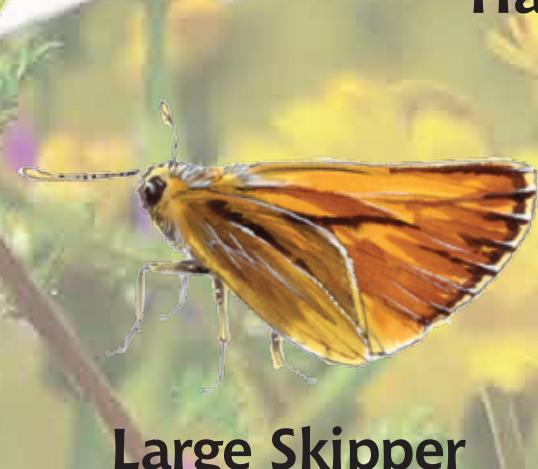
White-letter
Hairstreak



Six-spot
Burnet Moth



Tufted
Vetch



Large Skipper



Large White



Yarrow



Common
Knapweed



Bird's-foot
Trefoil

Out in the Open Field

What to see & hear

The sky above the meadow can be a busy and dangerous place for many creatures, with swifts and martins swooping to catch insects or kestrels searching for field mice and other small rodents. The familiar song of the skylark above a field is one of summer's most soothing sounds.



Skylark

Amazing facts: Kestrel

In order for the kestrel to hover when looking for prey, it has to fly forwards as fast as the wind blows it backwards. The bird drops in stages before finally diving down onto a small rodent.



Kestrel



Mole



Field Mice
& Voles



Shrew



Stoat



House Martin



Swallow



Goldfinch

